

CITIZEN

Label Printer Utility

User's Manual

Version 2.0.3.0

CITIZEN SYSTEMS JAPAN CO., LTD.

Copyrights

CITIZEN is a registered trademark of Citizen Watch Co., Ltd.

Windows[®] is a registered trade mark of Microsoft Corporation.

Datamax[®] is a registered trade mark of Datamax-O'Neil.

Zebra[®] is a registered trade mark of Zebra Technologies Corporation.

All other trademarks are the property of their respective owners.

Specifications subject to change without notice.

Copyright © 2011, CITIZEN SYSTEMS JAPAN CO., LTD. All rights reserved.

Revision History

Date	Note
July 2011	First publication
July 2011	Increased the version number with the release of 1.0.0.1
Nov. 2011	Increased the version number with the release of 1.0.1.0
June 2013	<p>Increased the version number with the release of 1.1.0.0</p> <ul style="list-style-type: none"> •Add the CL-S66xx to a supporting printer model. •Add a function to receive configuration. •Function to save of the configuration at the time of the end, and reflection of the configuration at the time of the start are added by "Filename.ini" file.
Oct. 2014	<p>Increased the version number with the release of 1.2.0.0</p> <ul style="list-style-type: none"> •Add the CL-E720 to supporting printer models. •Add a choice of receive data type as "Information".
Oct. 2015	<p>Increased the version number with the release of 1.2.0.1</p> <ul style="list-style-type: none"> •Fixed the bug which fails to receive configuration via USB in some cases.
Nov. 2015	Increased the version number with the release of 1.2.0.2
July 2016	<p>The program name is changed from "BarcodePrinterUtility" to "LabelPrinterUtility".</p> <p>The program version number is increased to 2.0.0.0 and this was applied to this document accordingly.</p> <p>The main features and differences are:</p> <ul style="list-style-type: none"> -The operating language is now selectable from English, Japanese, Simplified Chinese or Korean -The window size becomes adjustable. -"Easy" tab is added. -Minor bugs are fixed.
Oct. 2016	Increased the version number with the release of 2.0.1.0
Sept. 2017	Increased the version number with the release of 2.0.2.0
Jan. 2018	Increased the version number with the release of 2.0.3.0

CONTENTS

1. Getting Started	5
Utility Features Overview	5
System Requirements and Languages	6
Installing the Utility	7
Quick Start.....	7
2. Interface	8
Printer Driver	8
Serial (COM/VCOM)	9
Parallel (LPT)	9
USB	9
LAN.....	9
3. Sending Configuration.....	10
Send Configuration feature.....	10
[Standard] and [Advanced] tab	10
[Easy] tab.....	11
4. Receiving Configuration	12
Receive Configuration feature.....	12
[Information] Tab	12
5. Importing and Exporting settings	13
Export.....	13
Import	14
Configuration File	15
6. Restoring Default Settings & Exiting.....	16
Restore Defaults	16
Exit	16

1. Getting Started

Utility Features Overview

This utility is to configure the Citizen CL-S /CL-E printer series from Windows computer. Main features are: "Send Configuration" is to send new settings to a printer, "Receive" is to inquire the current settings of the printer, "Export..." is to save settings into a local file, "Import..." is to read settings from a local file. The exporting/importing features allow you to keep certain settings and utilize them anytime.

LabelPrinterUtility 2.0.0.0

Easy | Standard | **Advanced** | Information | ☐ Check/Uncheck All Items

Global Config
 Config Set: ☐ CONFIG SET 1

Page Setup
 Print Speed: ☐ 6 IPS | Auto Side Shift: ☐ 0 DOTS
 Print Darkness: ☐ 10 | Sensor Select: ☐ REAR ADJ SENSOR
 Darkness Adjust: ☐ 0 | Media Sensor: ☐ SEE THROUGH
 Print Method: ☐ DT | Top Form Sensor: ☐ OFF
 Ribbon Winding Direction: ☐ OUTSIDE | Top Form Length: ☐ 1.38 INCH
 Continuous Media Length: ☐ 4.00 INCH | Small Media Adjustment: ☐ OFF
 Vertical Position: ☐ 0.00 INCH | Small Media Length: ☐ 1.00 INCH
 Horizontal Shift: ☐ 0.00 INCH | Symbol Set: ☐ PM
 Vertical Image Shift: ☐ 0.00 INCH
 Vertical Image Shift: ☐ DOTS

System Setup
 Sensor Level: ☐ 1.5 V | Standby Mode: ☐ ON
 Paper End Level: ☐ 2.80 V | Standby Timer: ☐ 5 MIN
 Error Reporting: ☐ ON PRINTING | PNE Status: ☐ ON
 Cover Open Sensor: ☐ OFF | PNE Alarm: ☐ OFF
 Buzzer Select: ☐ ON | Control Code: ☐ ALT
 Metric/Inch: ☐ INCH | Emulation Select: ☐ ZPL2

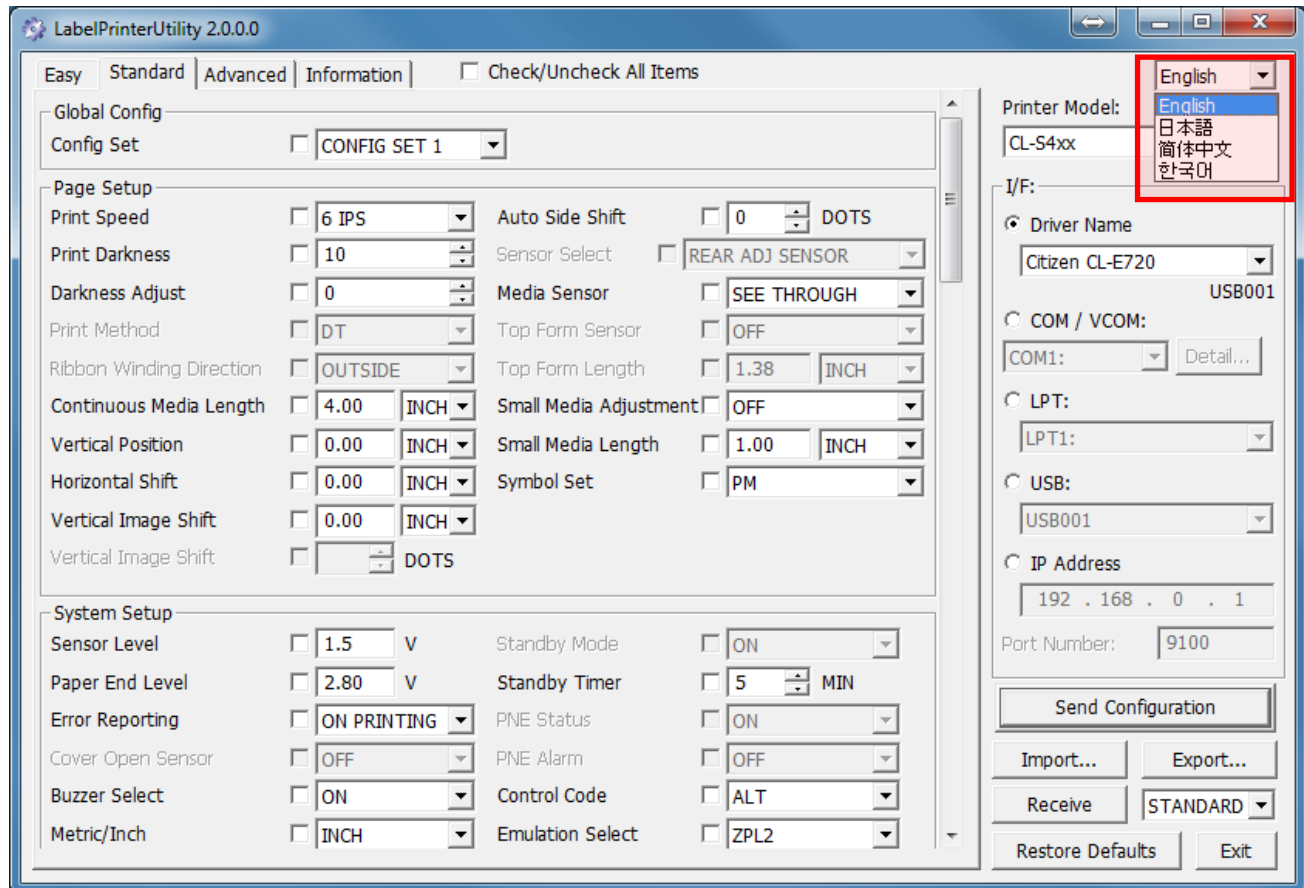
Printer Model: English
 CL-S4xx

I/F:
☒ Driver Name: Citizen CL-E720 (USB001)
☐ COM / VCOM: COM1: (Detail...)
☐ LPT: LPT1:
☐ USB: USB001
☐ IP Address: 192 . 168 . 0 . 1
 Port Number: 9100

Send Configuration
 Import... Export...
 Receive STANDARD
 Restore Defaults Exit

System Requirements and Languages

Windows 7 Professional SP1 or greater operating system required. This utility checks the current operation language and starts up either with Japanese, Simplified Chinese, Korean or English. You can also change the language manually.



This utility was tested with,

- Windows 10 x64
- Windows 8.1 x64
- Windows 8 x86
- Windows 7 Professional SP1 x86 Japanese
- Windows 7 Professional SP1 x64 English

Installing the Utility



LabelPrinterUtility.exe

This utility is provided as "BarcodePrinterUtility.exe" file format. Simply place the exe file into your computer and run it. This utility generates two files when exiting: "LabelPrinterUtility.ini" which keeps the selected printer model name and interface, "Recent.dat" which keeps all setting values.

If the files exist when starting up, the saved values will be reflected to the utility UI.

If the files don't exist, default values will be set. This means it always starts up

with default values when the utility is being started up in a non-writable media.

Quick Start

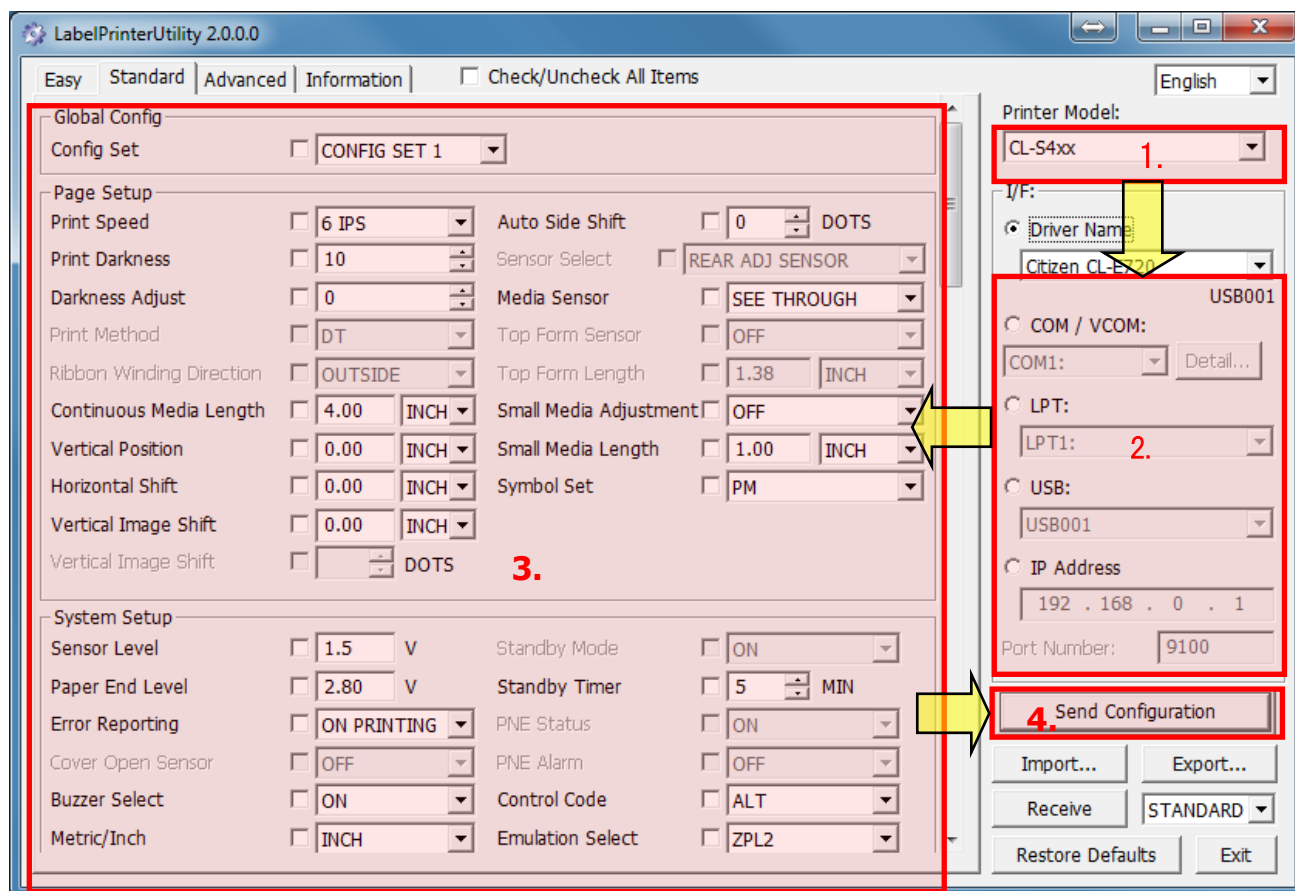
Start up the "LabelPrinterUtility.exe", then,

1. Select your printer model to configure.
2. Select the interface which you are using with the printer.
3. Select item(s) you wish to configure.

Note that the utility only configures the item(s) with the checkbox "checked".

4. Press [Send Configuration].

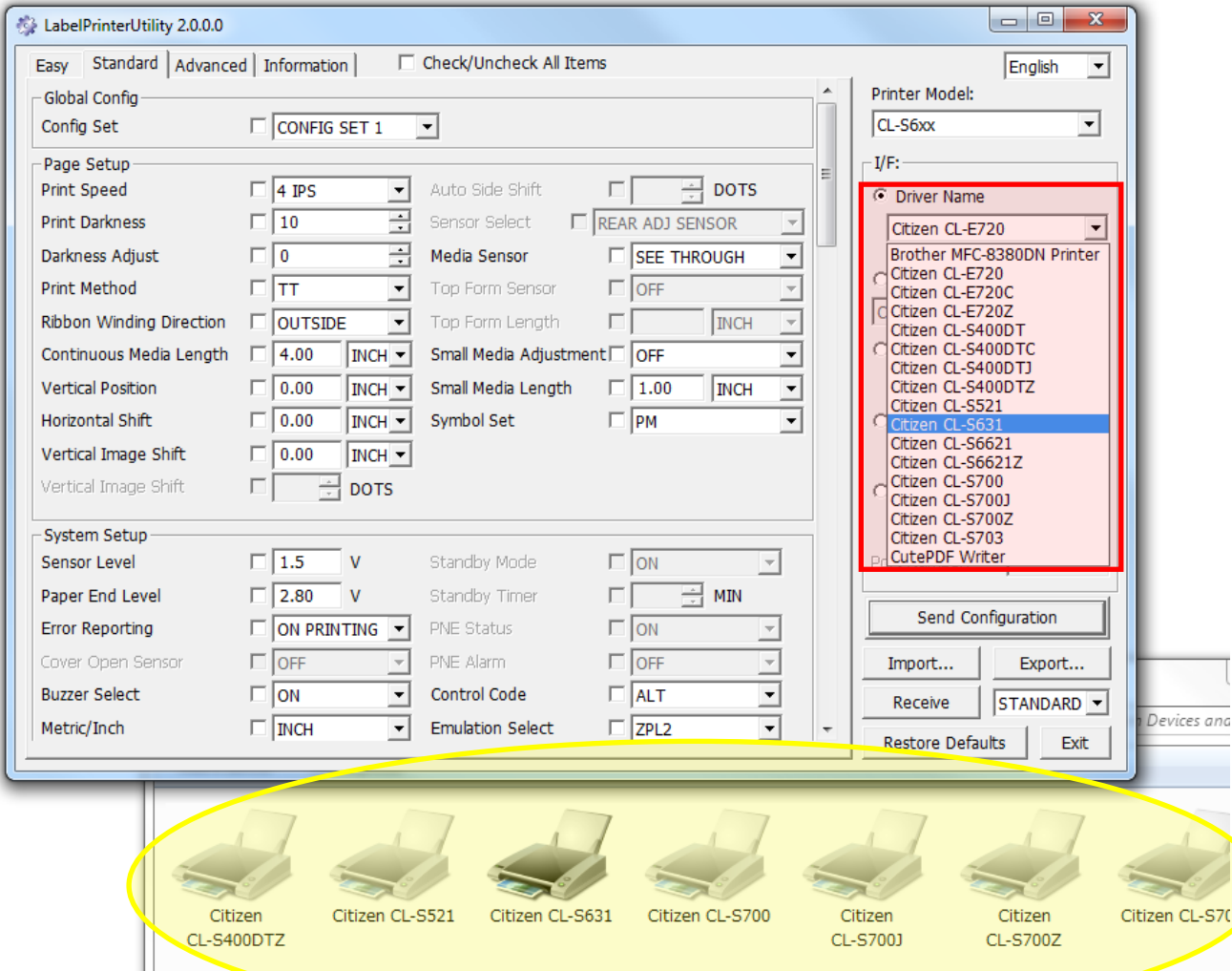
In most cases, the printer beeps and restarts when the configuration is successfully set.



2. Interface

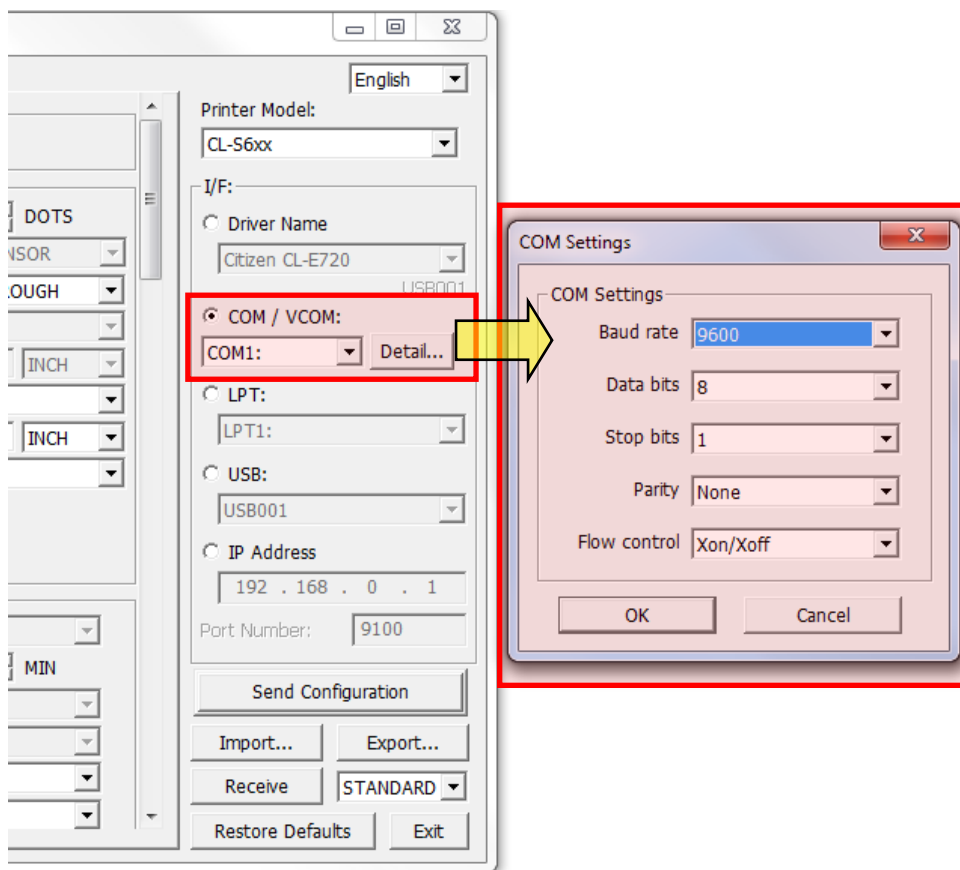
Printer Driver

If you select a printer driver as interface, the utility uses the printer port of the printer driver. The drop down list shows the printer driver(s) you have in your Windows computer.



Serial (COM/VCOM)

In case of Serial interface, select a correct COM port number, press [Detail...] to set up a correct COM port setting. The current COM port setting should be shown in the printer self-test. Please refer to the printer user's manual for details. If you are using the VCOM (Virtual COM) driver, the COM port number for the VCOM (e.g. COM8) should be shown in the drop down list.



Parallel (LPT)

In case of Parallel interface, select a correct LPT port.

USB

In most cases, a printer driver is installed with the use of USB connection. This selection also gives you an option to select a specific USB port.

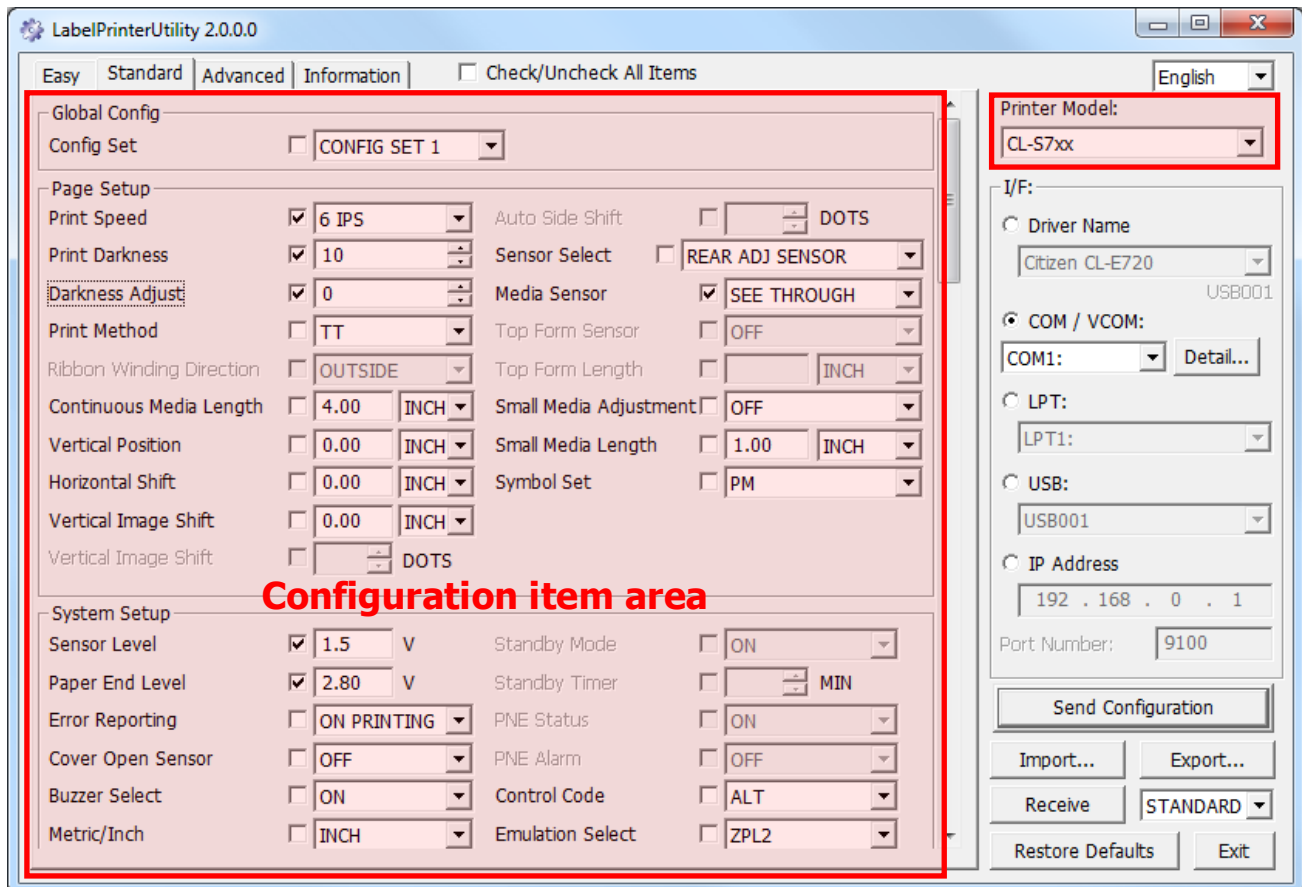
LAN

In case of LAN, please type in a correct IP address and port. Citizen Barcode printer models usually use the port 9100

3. Sending Configuration

Send Configuration feature

The configuration item area shows the items which you can configure with the printer model you selected. Select an interface, tick items you wish to configure, adjust values and send values by pressing the Send Configuration button. The Check/Uncheck All Items button helps you to check and uncheck all items literally.



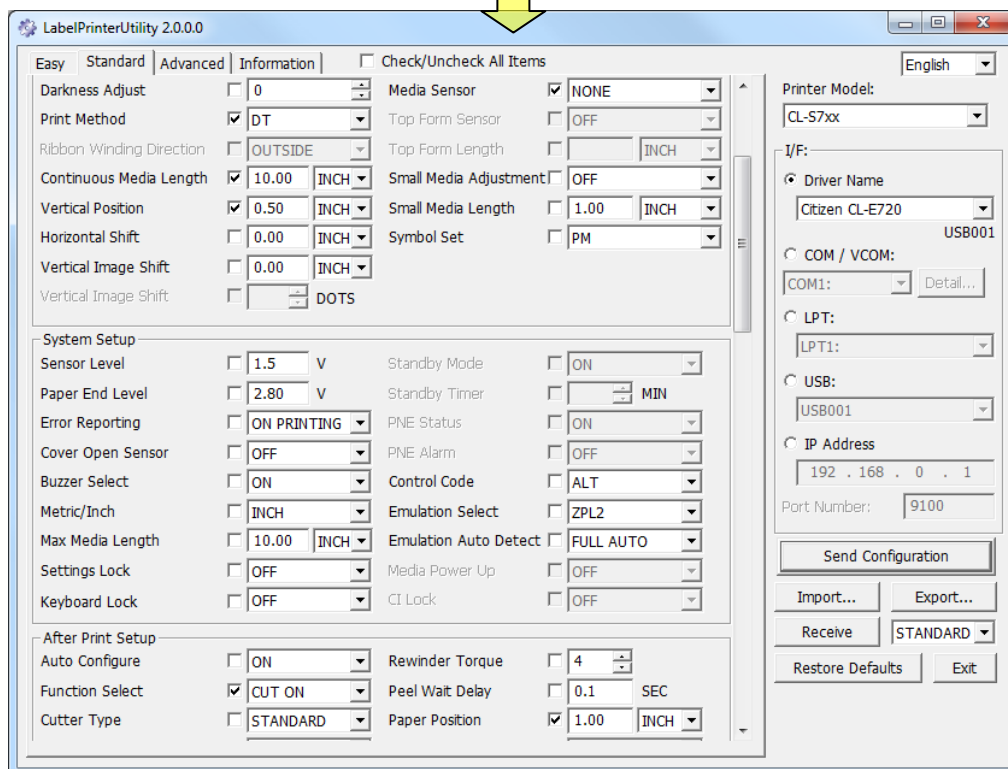
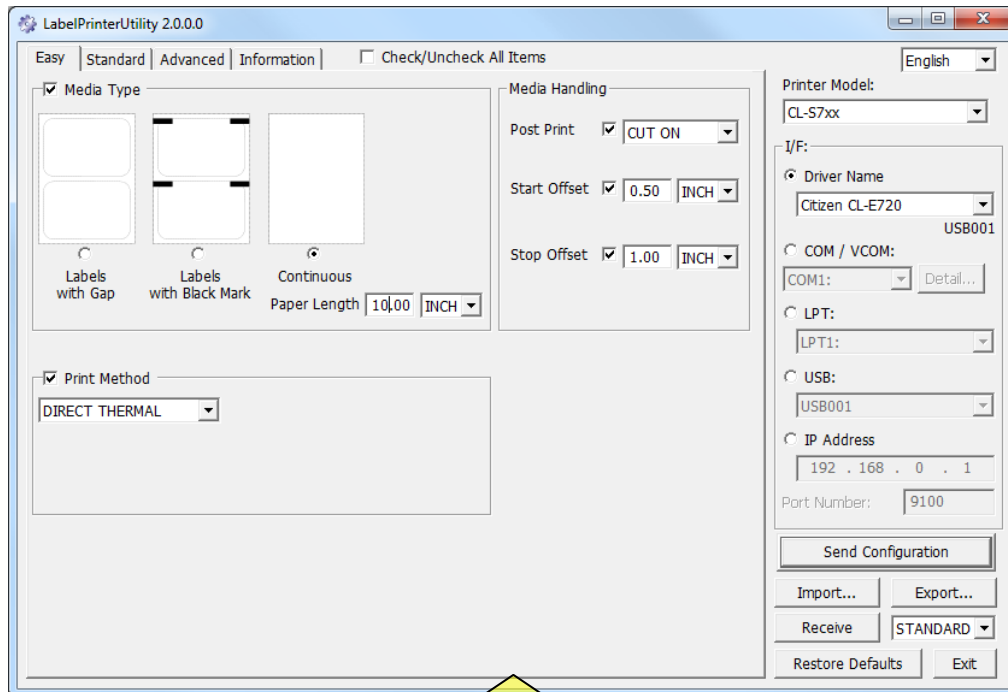
Selectable items, settable values and initial values are different depending on your region and printer model. Please refer to the user's manual or consult with your vendor.

[Standard] and [Advanced] tab

Not just standard items, but you can also set up advanced items by pressing the Advanced tab. It contains mechanically sensitive items and the printer may get fatal damage in some cases. Use at your own risk.

[Easy] tab

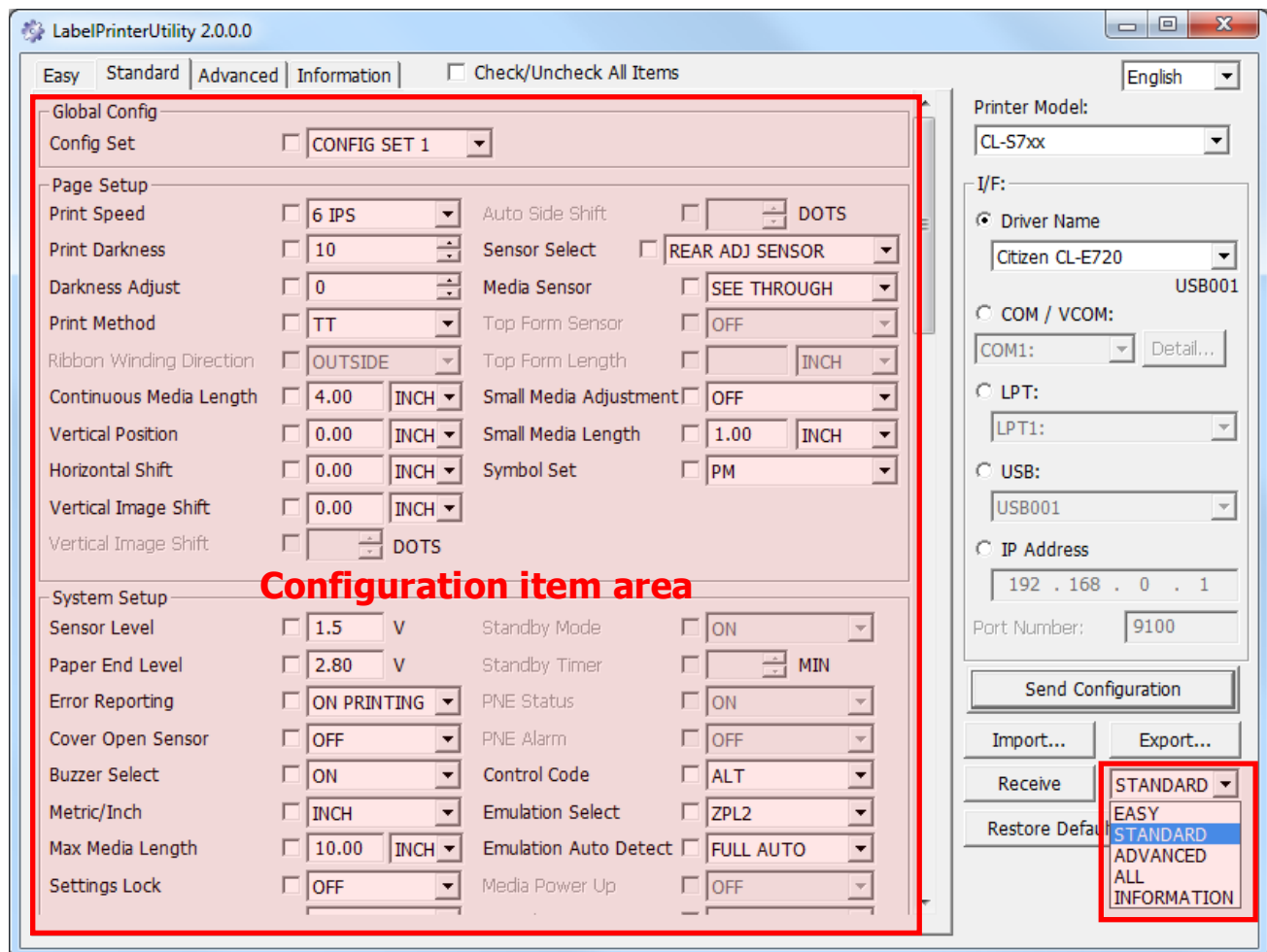
Using the Easy tab is a nice way to set up the printer quickly. Each item is connected to equivalent items in the Standard tab. Your setting in the Easy tab reflects to the Standard tab, and vice versa.



4. Receiving Configuration

Receive Configuration feature

The Receive button is to inquire the current settings in the printer and to show the settings in the Configuration item area. You can select what kind of information to receive, "Easy", "Standard", "Advanced", "All" or "Information."



[Information] Tab

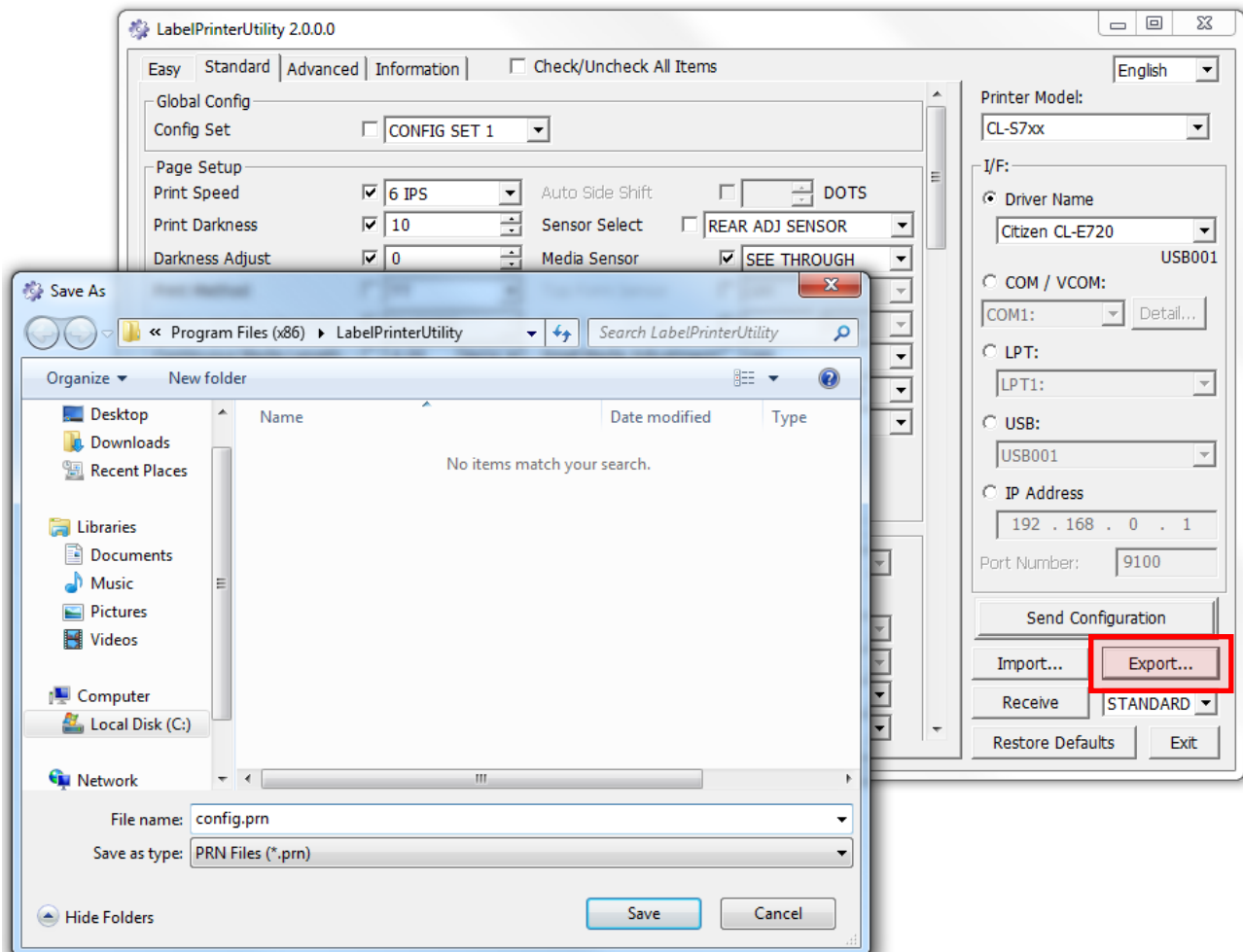
The Information tab shows the printer serial number, print counter, service counter and cut counter.

5. Importing and Exporting settings

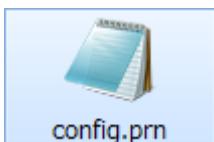
Import and Export features allow you to keep certain settings and utilize them later on. This also helps you to set up multiple printers with the same settings easily.

Export

Tick items you wish to save and press Export, type in a file name and save a file.

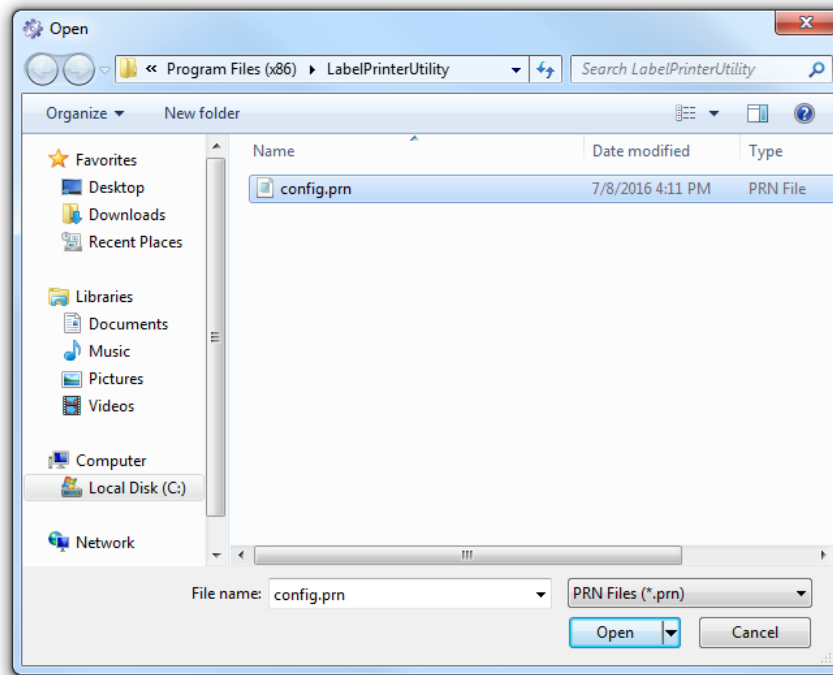


The configuration file will be saved as ".prn" file.

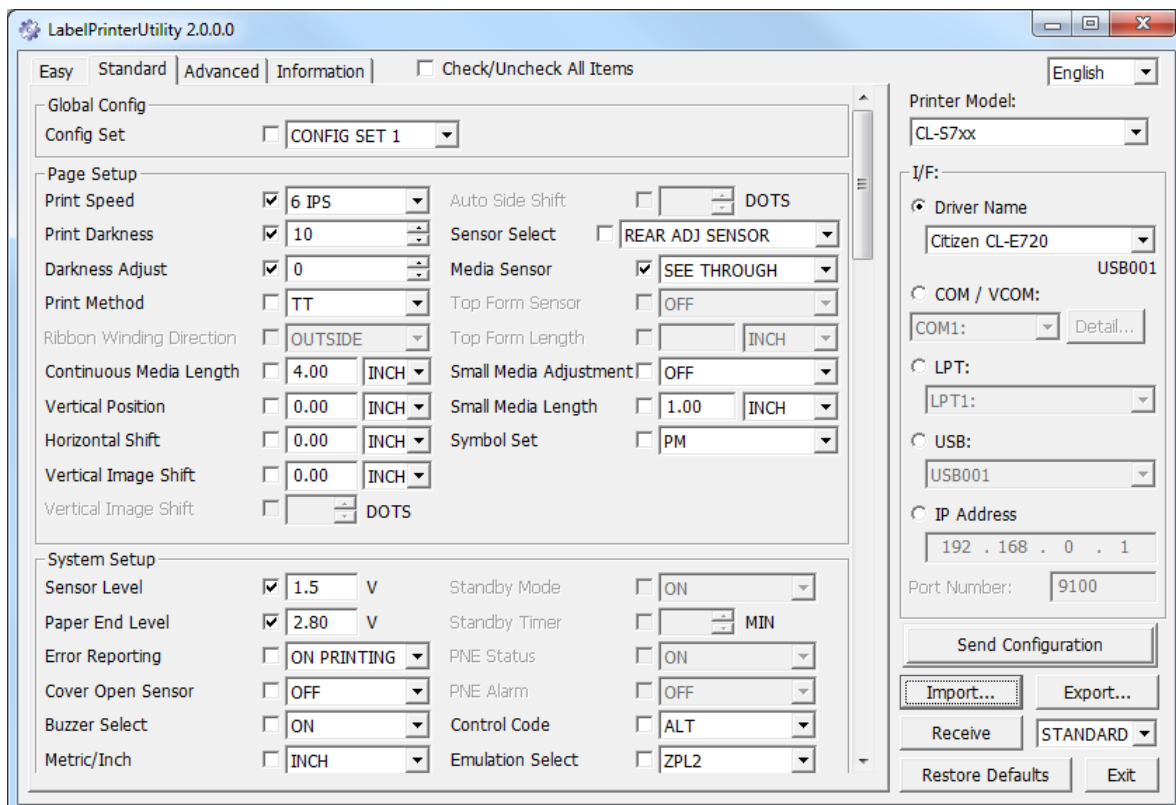


Import

Press Import, select a configuration file stored in your local computer.

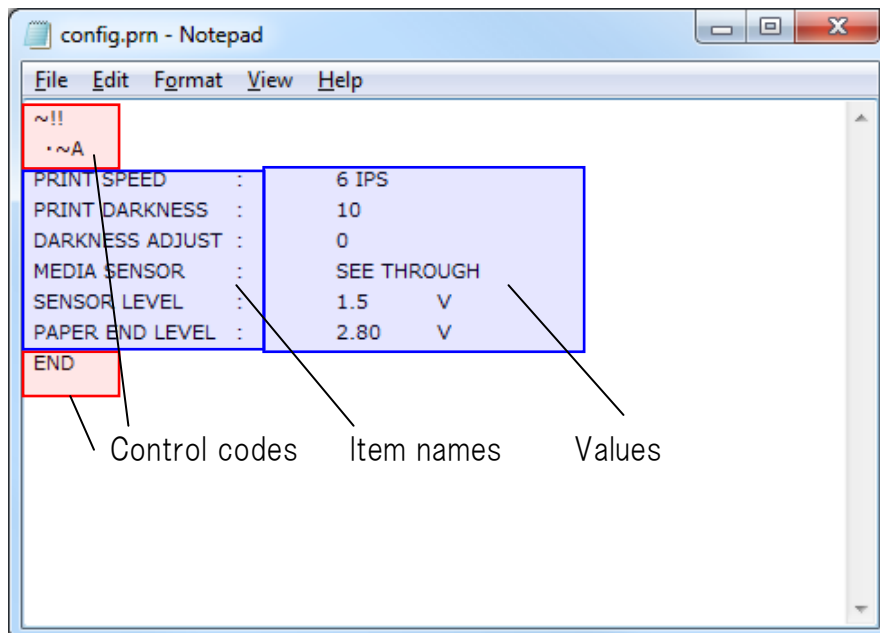


The setting(s) in the configuration file will be populated to the configuration item area (if the data is valid).

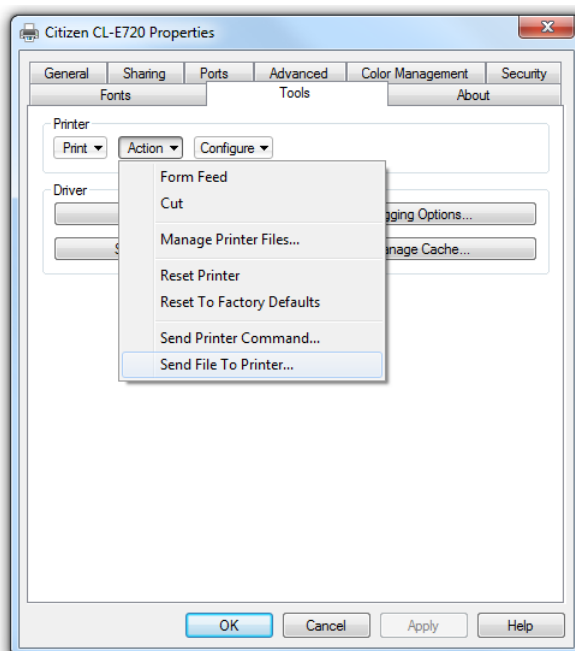


Configuration File

The configuration file can be open and edited by Notepad. Make sure not to edit control codes. The configuration file could be corrupted otherwise.



The configuration file can be sent to the printer directly without importing to the utility. Open printer properties, go to [Tools>Action>Send File To Printer] and select a configuration file.



6. Restoring Default Settings & Exiting

Restore Defaults

The initial values for the selected printer model will be set to the configuration item area. This button is not to initialize the printer directly.

Exit

Exit button is to simply attempt to close the program (equivalent to the red "X" in the top right corner of the window).

Label Printer Utility – User's Manual
January 12, 2018 Version 2.0.3.0
CITIZEN SYSTEMS JAPAN CO., LTD.
<http://www.citizen-systems.co.jp/>